



Visible Light Technology To Prevent Infections

1 Year: Funding Journey Caveats, Pitfalls, What Worked

Vicki Farrar, CEO

Farrar@lightlinemedical.com

435.729.9397

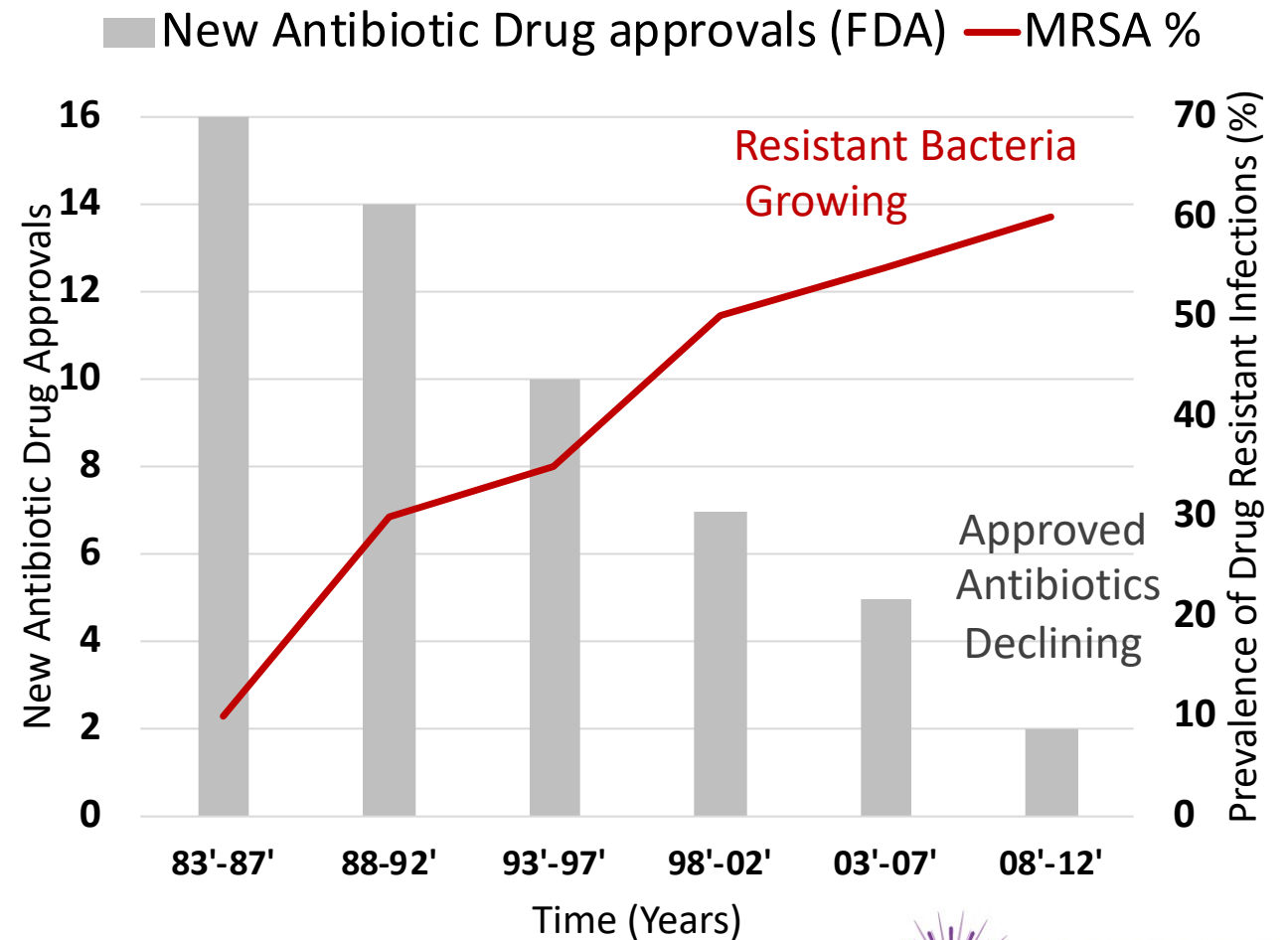


© 2018

Hospital Acquired Infection (HAI) Crisis

US:

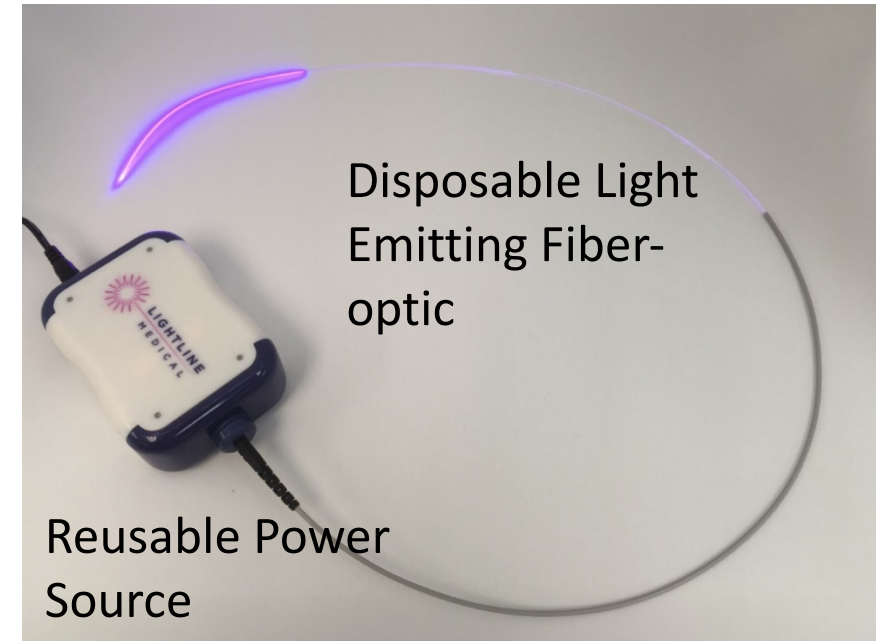
- Annual Cost: \$19B
- Annual Deaths: 100,000
- Staggering Penalties
- **> 60% Catheter-related**





Solution: Light Line™ Phototherapy System

- *Visible* (405 nm) light (**not UV**)
 - **No antibiotic resistance**/chemical free
 - Sterilizes/disinfects **inside & outside** catheter!
 - Off-the shelf catheters
 - Patented

**1st Antimicrobial for ALL Infections
(urology, respiratory, vascular, dialysis)**



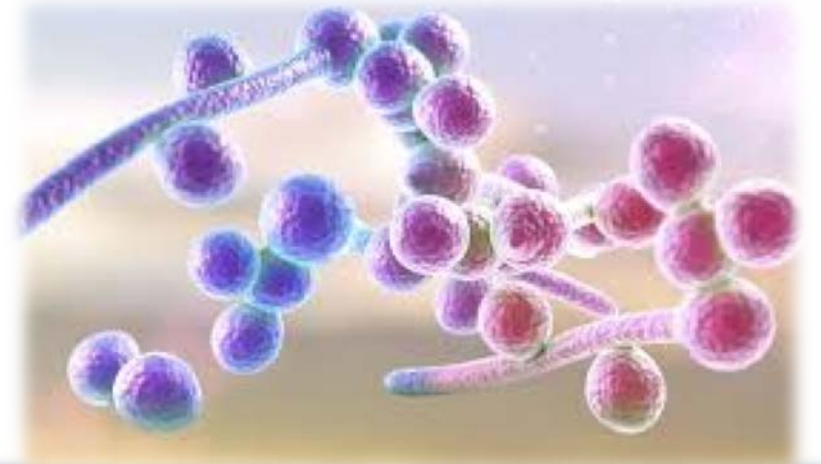
Market Validation: Traction/Diligence Complete

Proof of Concept	Robust IP Portfolio	Exclusive Partnership	Grants & Awards	FUNDING HISTORY
<p>Completed</p> <ul style="list-style-type: none"> <i>In vitro</i> <i>In vivo</i> <p>2 peer reviewed publications</p>	<p>5 Issued Patents 12 Pending (7 Int'l)</p> <p>Freedom to Operate Opinions</p>	<p>Medline Industries (~\$10B revenue)</p>  <p>3 Years from launch North America Urinary Only</p>	<p>\$255K non-dilutive</p> <ul style="list-style-type: none"> AMA NASA NSF USPTO USTAR IBM, Rice, Baylor & more 	<p>\$1.9M Raised</p> <p>Notable Investors:</p> <ul style="list-style-type: none"> Merit Medical (\$1M) Medline Industries Univ. of Utah

Our Device Kills Infectious Micro-Organisms

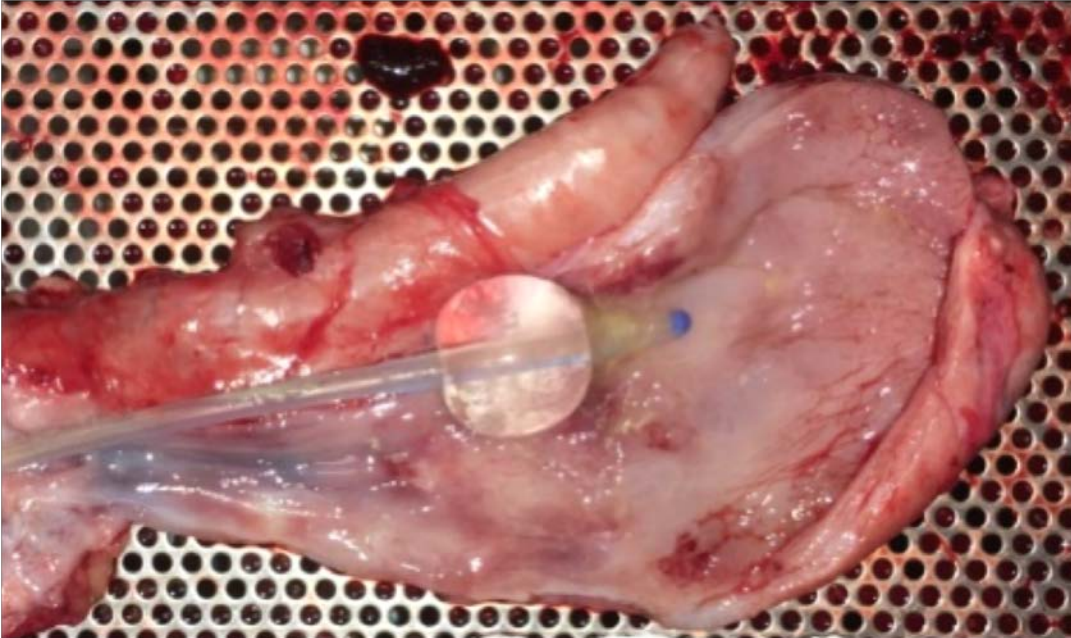
6 Organisms Tested:

- E. coli (CAUTI #1 Isolate)
- S. epidermidis (Peritonitis #1 Isolate)
- S. aureus
- S. pneumoniae
- P. aeruginosa
- C. albicans (hardest to kill Fungi)



Foley Pig Trial: Gross Pathology

Light Treated



- Minimal redness
- Minimal Inflammation
- **No gross evidence of bacteria**

No Light Control



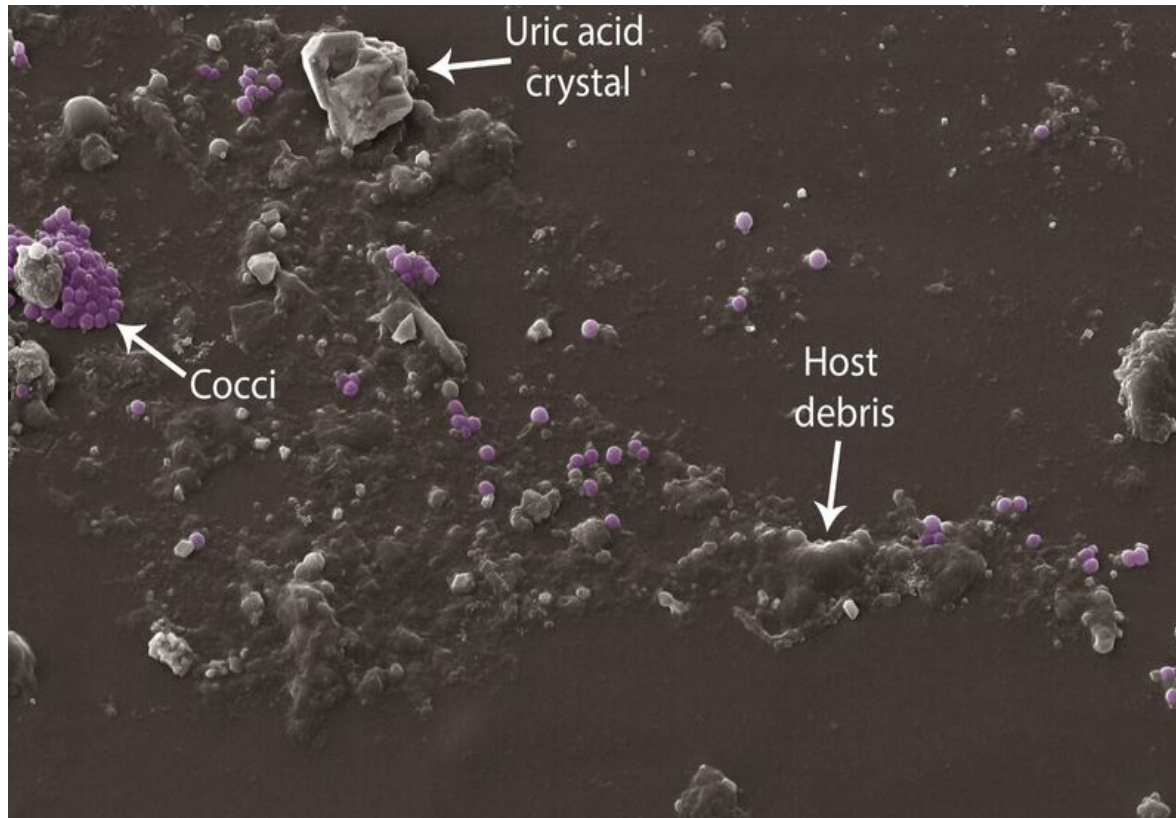
- Dark red lesions
- Severe Inflammation
- **Infection from bacteria**



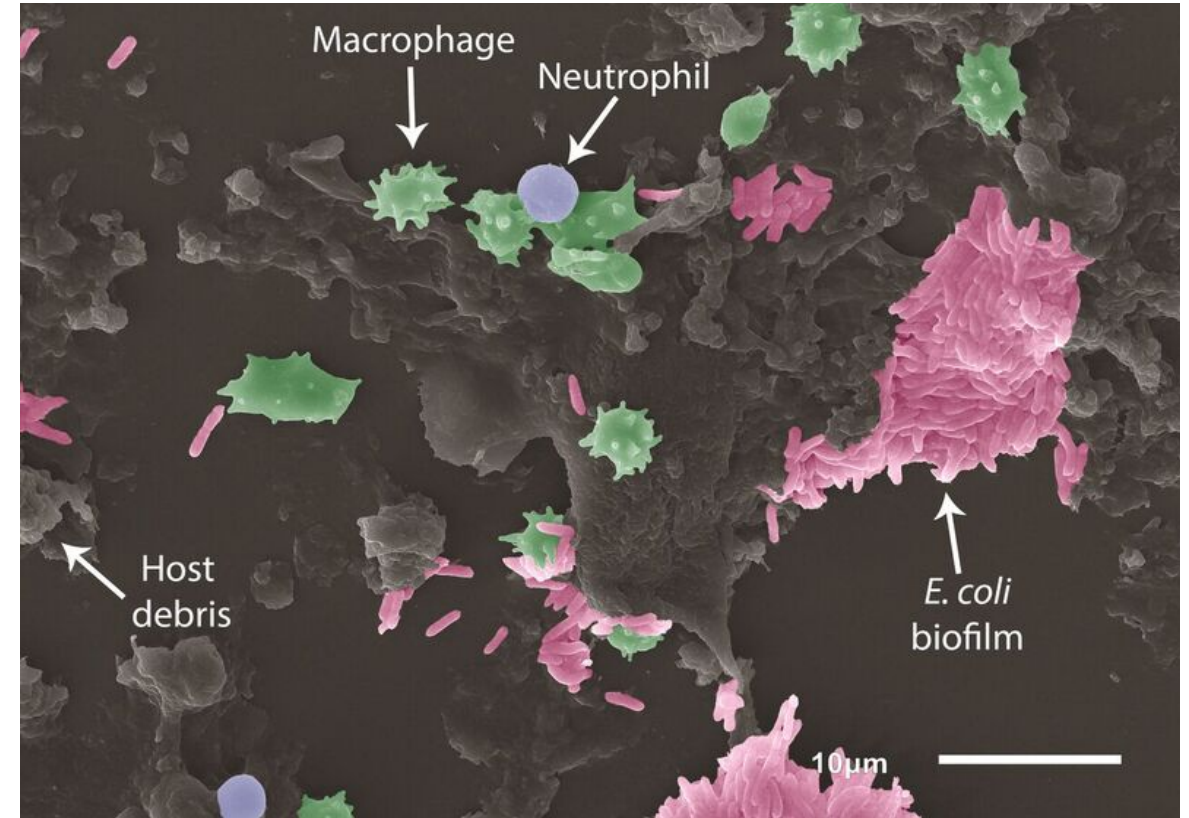
In vivo SEM Images (Extraluminal Catheter Surface)

E. coli Inoculated Catheters

Biofilm Prevention



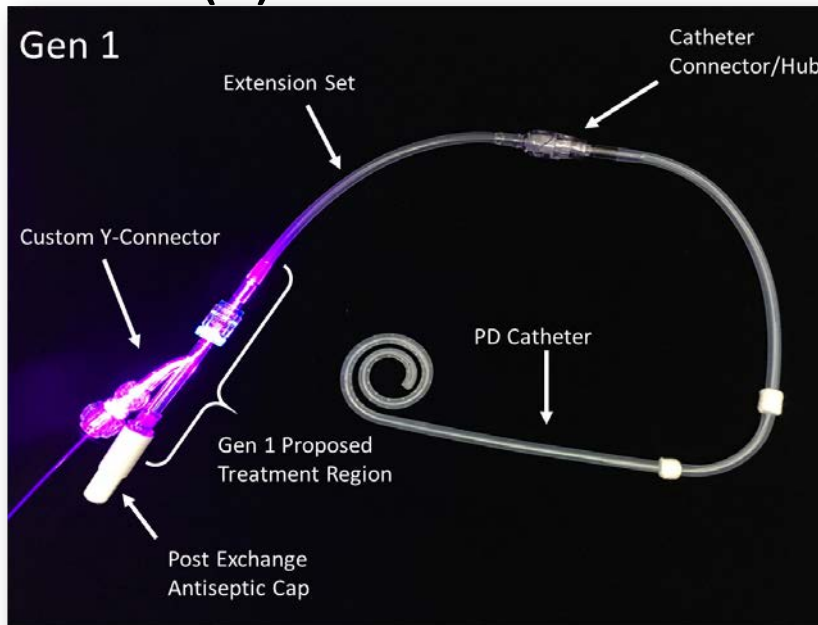
Light Treated



No Light

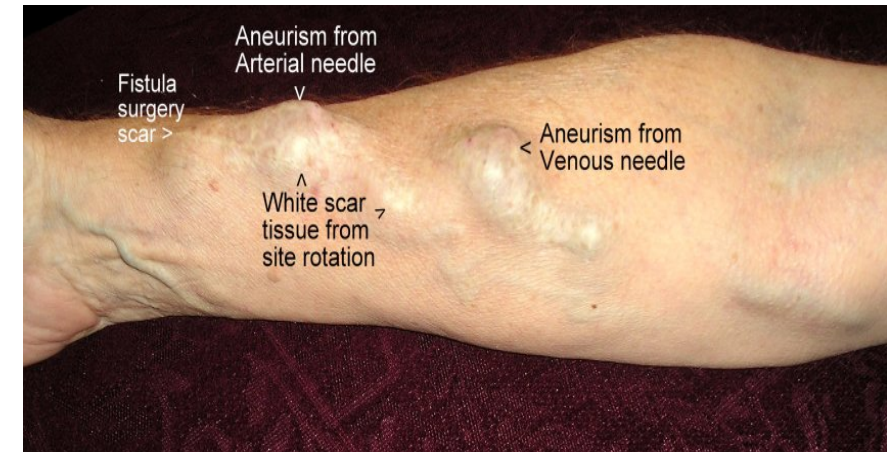
Initial Focus PD

- Huge clinical need
- PD preferable/HD horrible
- Infections: #1 reason patients on HD
- **Executive Order Incentivizing PD (2019)**
- 510(k)



Light Line™ PD Catheter

Hemodialysis (HD) Scarring



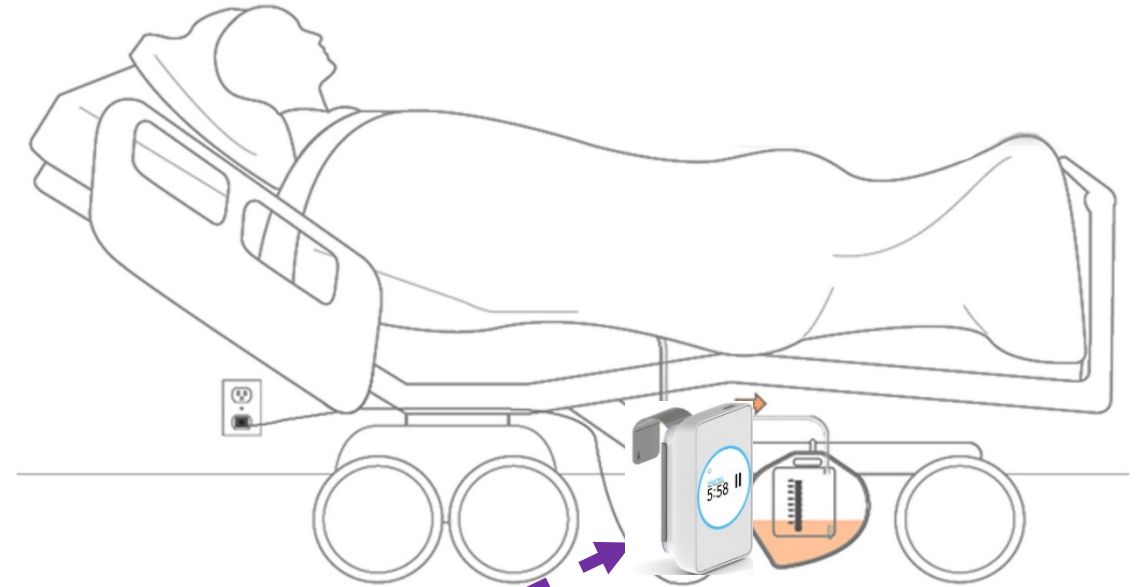
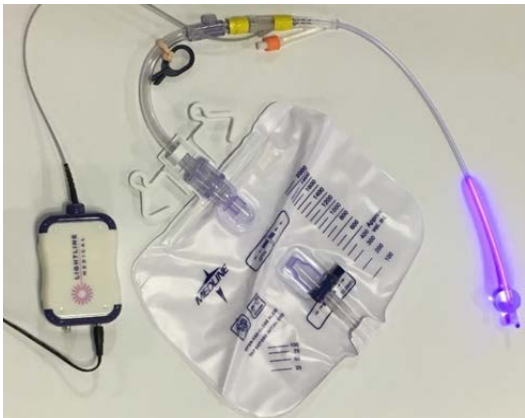
Peritoneal Dialysis (PD)



Next: Light Line Foley to Prevent CAUTI

- Most common HAI (450,000 yr.)
- Rate unchanged in decades
- No reimbursement/penalties
- \$10,200 (ICU)
- 510(k) De Novo
- **No Effective Solution**

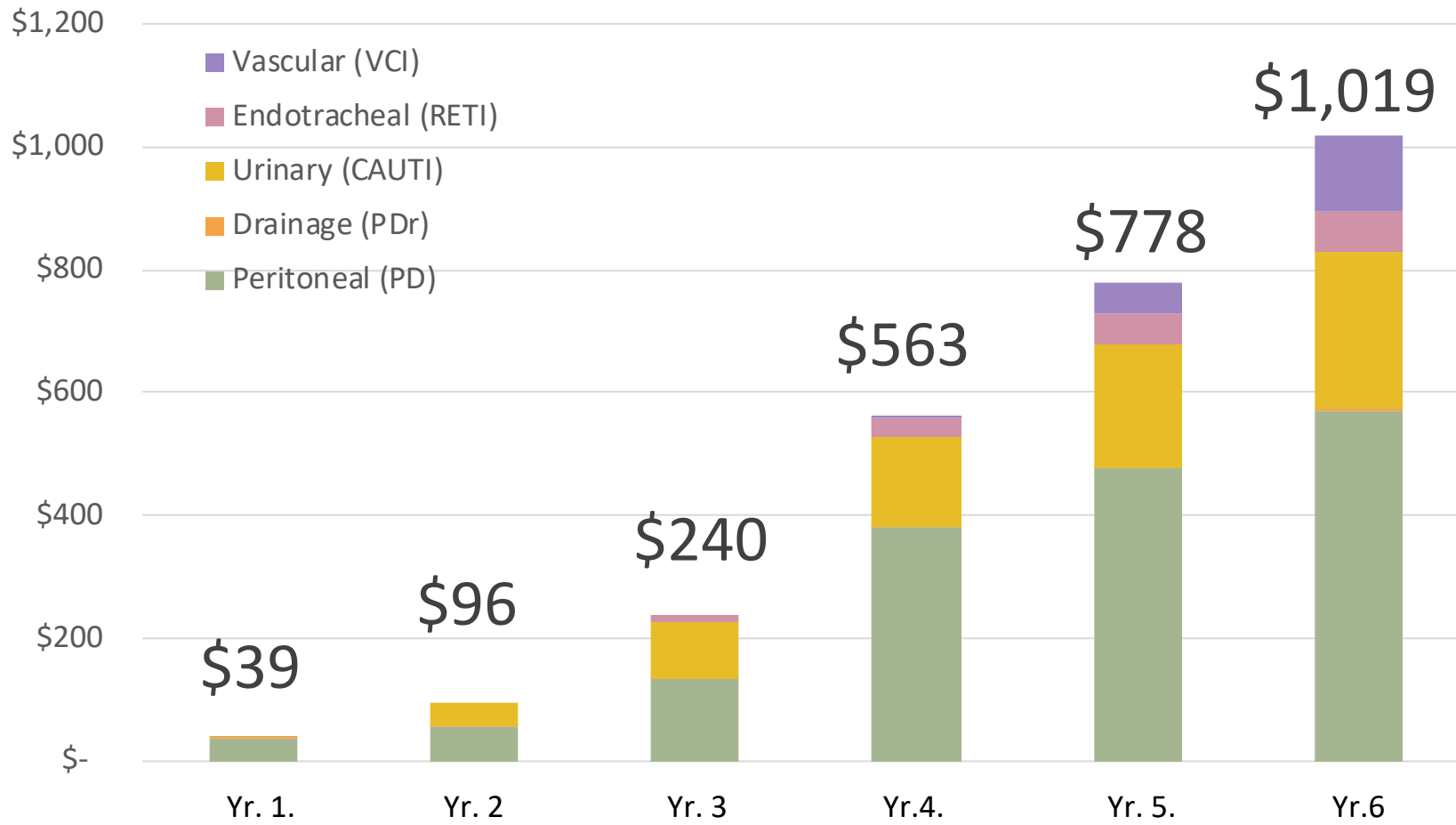
Light Line™ Foley



Simple attachment to
Hospital Bed, IV Pole, or
Wheelchair

\$1B+ Revenue Opportunity

<10% Penetration of \$11B Target Markets



Why Buy

Patient: No infection

Payer: Saves \$

Provider/Hospital:

- No penalty (\$)
- Reputation



Exit Strategy/Multiple M&As

8 Potential Exits: 4 Fields of Use, US & Int'l

Company	Market Cap	Urology Catheters	Vascular Catheters	Dialysis Catheters	Respiratory Endotracheal
BD/Bard	\$68B	✓	✓		✓
Fresenius	\$22B			✓	
Teleflex	\$12B	✓	✓	✓	✓

Experienced Leadership Team

Dinesh Patel, PhD, Executive Chairman

- Co-Founder vSpring Capital: life sciences
- Founder & CEO TheraTech (acquired \$350M by Watson Pharmaceuticals)
- Founder, Chairman, Investor, & Advisor in multiple life science companies



Vicki Farrar, Esq. CEO & Director

- Founder & CEO, Catheter Connections, which changed infusion standard of care, sold to Merit Medical 2017
- 20 years device start-up Executive expertise
- Attorney & Device Veteran



Perry Croll, Chief Engineering Officer

- 3 successful startups & exits to Johnson & Johnson, Teleflex and ConvaTec
- 20 years device start-up expertise (R&D, Engineering, Regulatory, Operations)



Kelly Powers (Active Board Member – Product Development Advisor)

- 30+ years medical industry expertise
- Former VP of R&D Bard Access
- Recently retired as VP Science & Technology at C.R. Bard



Mark Ehlert, Director (Strategic Advisor)

- 40+ years Quality & Regulatory/Devices; Exec. Mgmt. Baxter, Cardinal, Hospira
- Peritoneal Dialysis Expertise (Baxter)
- President, 315 Ventures, Ltd.
- Investor in Light Line



1 Year Ago
Great: Technology, IP, Team, Strategic Investment



1st to come to the Rescue



1st: Keiretsu Forum

Without Our Investment Bankers





Founded in 2000 | Funded 1,000+ companies
US \$750 M+ invested to date | 3,000+ members
Over 50 chapters in 12 countries on 3 continents



Andalucía	London		Silicon Valley
Atlanta	London, Canada	Pebble Beach	Singapore
Bangalore	Los Angeles	Philadelphia	Spokane-Inland
Barcelona	Madrid	Pittsburgh	Tacoma
Beijing	Miami	Portland	Tel Aviv
Boise	Midwest	Prague	Tokyo
Chennai, India	Mumbai	Rockies	Toronto
Donostia/San Sebastián	New York	San Diego	Vancouver
Dubai	Nordics	San Francisco	Vaughan
East Bay	North Bay	Seattle	Victoria-Vancouver Island/BC
Istanbul	Orange County	Seoul	Washington D.C.
Jakarta	Paris	Shanghai	Waterloo-Wellington
Kirkland-Eastside		Shenzhen	Westlake Village

Established in 2016 & 2017 YTD in red font



Keiretsu Journey – Began in Mid-West

- Screened
- 3-day Road Show
- Diligence/Brutal but Golden
 - Led (Cantilever Investments)
 - Others
- Road Show Update

Contents

COMPANY OVERVIEW	3
MANAGEMENT TEAM, BOARD AND KEY ADVISORS.....	6
EXECUTIVE SUMMARY OF DUE DILIGENCE FINDINGS AND DEAL TERMS	10
DUE DILIGENCE TEAM BIOGRAPHIES	19
APPENDIX A: SALES AND MARKETING REPORT	23
APPENDIX B: COMPETITION REPORT	30
APPENDIX C: FINANCIAL REPORT	34
APPENDIX D: TECHNICAL REPORT	50
APPENDIX E: REGULATORY REPORT	63
APPENDIX F: MANAGEMENT REFERENCE CHECKS	66
APPENDIX G: LEGAL REVIEW OF CORPORATE AND DEAL DOCUMENTS	74
APPENDIX H: SITE VISIT REPORT	87
APPENDIX I: FREQUENTLY ASKED QUESTIONS.....	93
APPENDIX J: INTELLECTUAL PROPERTY REPORT	95
APPENDIX K: POWERPOINT PRESENTATION DECK	111
APPENDIX L: TERM SHEET	120

THEN FUNDING TOOK OFF

Others Relied on Keiretsu Diligence

Keiretsu Chapters

- NW (5-day road show)
- NW Expo
- N. Ca. (4-day road show)
- S. Ca. (3-day road show)
- Boston

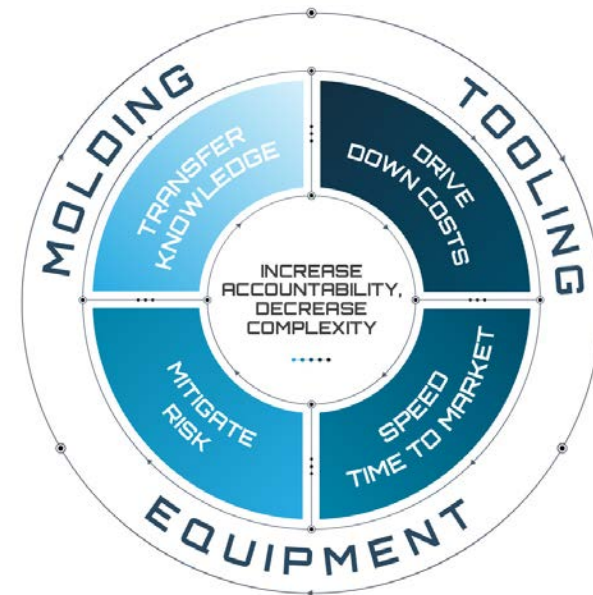
Others

- Angel Groups
- Keiretsu Referrals
- Doctors
- Company Executives



MGS Mfg./Alligator Holdings Introduced by Cantilever

- MGS Founded in 1982
 - 1400 employees, US, Mexico and Ireland
 - Engineering & design for mfr., mold making
 - Scalable automation
- Capabilities for Light Line Medical
 - Prototype, Engineering (including electrical), Molding, Final Product Mfg.
 - Contract out what MGS can't do



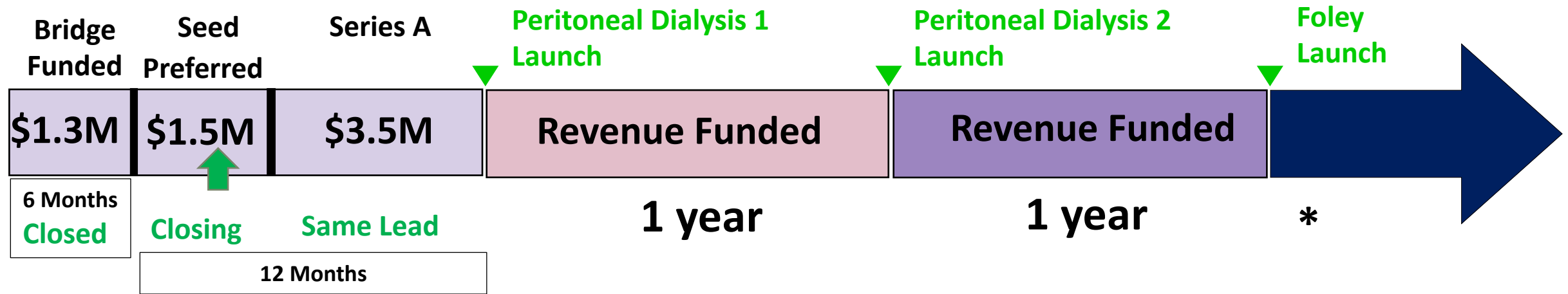
WHY INVEST?

WE FALL WITHIN THEIR VISION

INVEST IN COMPANIES WHERE MGS' MFG. EXPERTISE
WILL HELP ASSURE SUCCESS



PD Gen-1 Timeline & Use of Proceeds



Significant increase in valuation between Seed Preferred & Series A

Thank-you

Nothing changed in our technology, IP, team, etc.

Diligence is the mother of good luck.

- *16th century proverb*